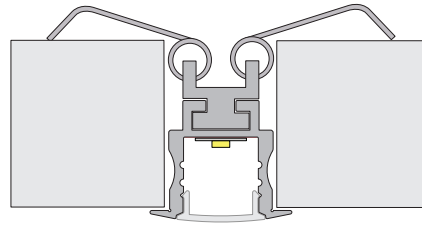
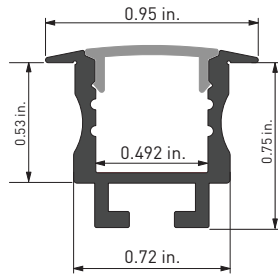


Ankr® 3 In-Wall Channel

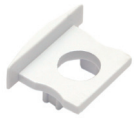


shown with closed end cap



Ankr channel models are designed with a lip on either side of the channel that ensures a clean installation for in-wall applications in drywall. They are compatible a strong springform clip that holds the channel securely in place for both horizontal and vertical configurations. The Ankr 3 model features a narrow form factor that can accommodate a single row of dry location Alloy LED tape light.

- Thermally-balanced design for maximum cooling
- Channel covers protect LED tape light
- Diffuser covers provide smooth light diffusion with no hotspots
- Full range of accessories for a great-looking installation
- Complete kits available to create a finished fixture



open end cap



springform mounting clip

Item #	Description
AL-50-11-0111-KIT	4 ft. kit: includes 1 channel, 1 diffuser cover, 2 pair pack of plastic end caps, 4 springform clips
AL-50-11-0121-KIT	8 ft. kit: includes 1 channel, 1 diffuser cover, 4 pair pack of plastic end caps, 4 springform clips
AL-50-11-0011-AL	channel - 4 ft. - aluminum finish *
AL-50-11-0021-AL	channel - 8 ft. - aluminum finish *
AL-50-11-9902-FRT	diffuser cover - 4 ft.
AL-50-11-9903-FRT	diffuser cover - 8 ft.
AL-50-11-9912-CLR	clear cover - 4 ft.
AL-50-11-9913-CLR	clear cover - 8 ft.
AL-50-11-9951-WH	plastic end caps 2 pair pack: 2 open, 2 closed - white
AL-50-11-9956-WH	plastic end caps 10 pair pack: 10 open, 10 closed - white
AL-50-11-9986-AL	springform mounting clip

*Channels are also available in custom powder-coated finishes, including white and black, by special order.

This channel is compatible with selected tape light models only, see the "Continua Channel & Tape Light Compatibility Chart" PDF on the Resources page on our website for information.